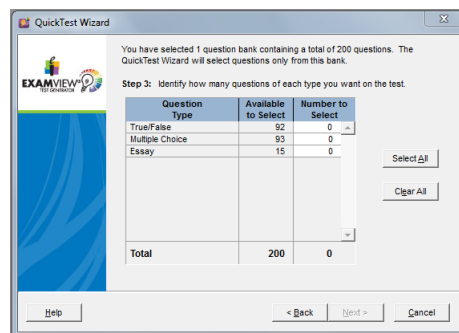
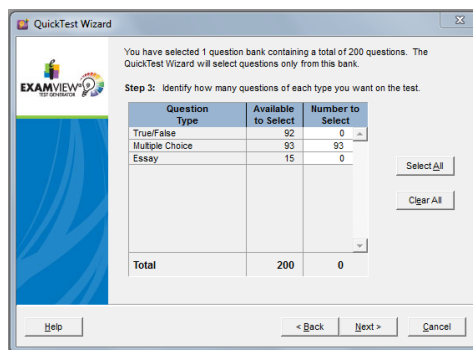


Adding ExamView Test Bank into Moodle

1. Open up the ExamView Program.
All Programs, eInstruction, ExamView Assessment Suite, Exam View Test Generator.
2. Create a new test using a wizard.
3. Give the test a name. Click Next.
4. Highlight a chapter and click the Select button. Click Next.
5. Your screen should look similar to the one below. The questions are divided into True/False, Multiple Choice, and Essay. Multiple Choice questions work rather well in Moodle. If you want to export, T/F or essay, feel free. One suggestion—export categories separately.



To export all possible multiple choice, type in the number that is under the Available to Select grey box in the Number to Select white box. Click Next.

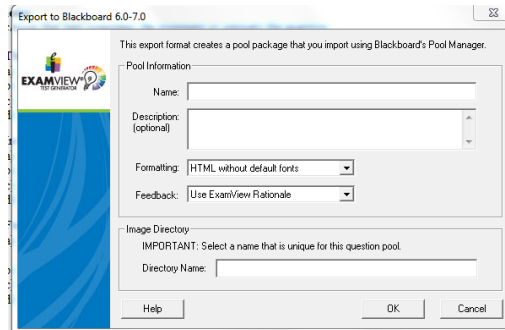


6. Click Finish. A test has just been built in ExamView. You may exit ExamView. It is not necessary to save the test.
7. Now, we need to export. Select File, Export, Blackboard 6.0-7.0.

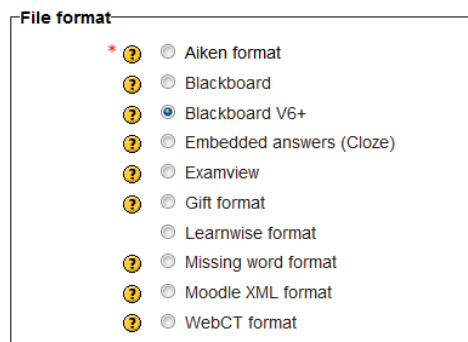
- Choose where to save the file (save to the Desktop for convenience), and give the file a name. Notice that this file will be saved as a zip file. Click Save.

NOTE: File naming is very important. Be as consistent and relevant as possible. Watch things like capitalization, spacing, abbreviations. Don't capitalize on Chapter 1, only to use lower case for chapter 2. If you do this step correctly at this point, it will save you a step once you are in Moodle.

- Complete the Name and Directory Name on this screen. (Hint: It can be the same. It can also be the same as your file name.) Click Ok.



- Go to moodle.mcm.edu in Mozilla Firefox. Log in and password.
- Go to your course. Turn editing on.
- Click on the Settings Block. Select the arrow to the left of Question Bank to display the choices.
- Choose Import.
- Under the File format section, select Blackboard V6+.



15. The General section has a place for you to import the file into a particular category. You can accept the options already chosen and the test bank will be imported with the same name as the file name.

General

Import category ⓘ LPC

Get category from file Get context from file

Match grades ⓘ Error if grade not listed

Stop on error ⓘ Yes

16. To Import questions from file, click Choose a file. Click on the Browse button to locate the zip file you exported from ExamView. Select the file. Click Open. Click Upload this file.

Import questions from file

Import* Maximum size for new files: 512MB

File picker

Attachments:

Search:

Author:

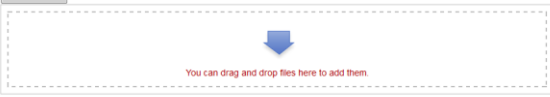
Choose license: All rights reserved

-OR-

You can drag and drop the files. Adjust your browser so that you can see your desktop files. Find the file on your desktop. Click once and hold down the mouse button. Drag your mouse to the “flashing” arrow. Release the mouse.

Import questions from file

Import* Maximum size for new files: 512MB



You can drag and drop files here to add them.

There are required fields in this form marked *

17. Click on the Import button.

18. After a few moments, your test questions will be added.