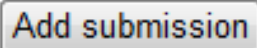


Upload File for Assignment
ADD METHOD

Open the Assignment in Moodle.



Click the **Add submission** button.



Click the **Add** button.

File submissions

Maximum size for new files: 512MB, maximum attachments: 1 - drag and drop available?

Add... Create folder

Files

A large dashed rectangular box with a blue arrow pointing downwards in the center. Below the box, the text reads "You can drag and drop files here to add them."

Save changes Cancel

Click the **Add** button.

To upload a file, you must locate the file on your computer. Click **Browse**.

Attachment :

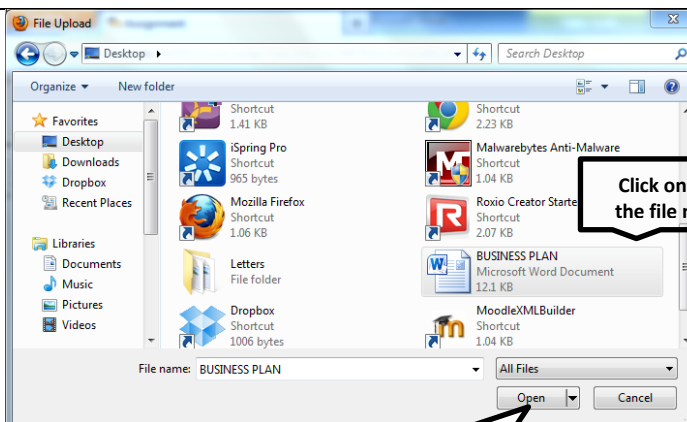
Save as :

Author :

Choose license :

Click **Browse**.

Locate file on your computer. Click once on the file name. Click the **Open** button.



Click the **Open** button.

Click on **Upload this file.**

Attachment : C:\Users\piel.linda\Des

Save as :

Author :

Choose license :

Your file now displays as an icon in the boxed area. Click on the **Save changes** button.

Maximum size for new files: 512MB, maximum attachments: 1

Create folder Download all

Files



BUSINESS PLAN.docx

Your file has been submitted for grading.

Submission status	Submitted for grading
-------------------	-----------------------